

Mākena

Mākena is an area consisting of land uses ranging from luxury golf courses and high-end single-family homes to historic and culturally sensitive sites. Development in the region has capitalized on Makena's natural beauty and dry climate making it a desired location for resorts and second homes for many, while its rich cultural history has made it a desired place for preservation.

Dating back to the 1998 Kihei-Makena Community Plan and the Mākena Resort's Master Plan, land use designations and changes in zoning have occurred allowing for a mix of single and multi-family residents, two new hotels, a wastewater treatment facility, and commercial use.

Proposed Change

The master-planned luxury residential community consists of single and multi-family homes, mixed use, and parks/open space will be expanded, adding to the already developed parcels throughout Mākena.

Challenges and Opportunities

The development of the remaining parcels in Mākena will provide the opportunity for more luxury homes in the area, but the challenge of providing workforce housing in an area so close to the South Maui resort employment center exists. This development also faces the challenges of developing water and flood control infrastructure, preserving cultural sites, and legal challenges from local groups opposed to the continued development of Mākena.

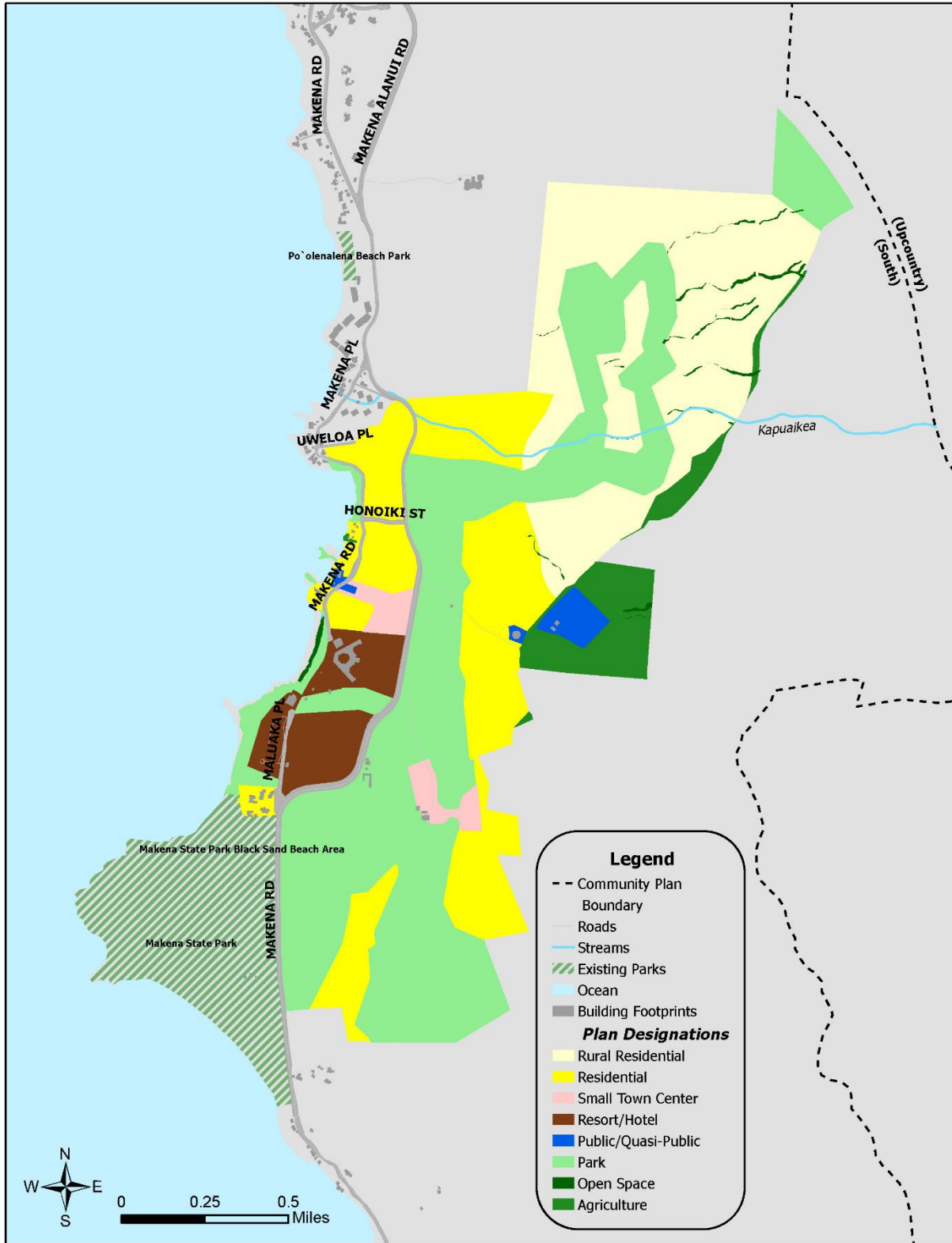


Figure 3.16: Area of Change | Mākena