

In consideration of the possibility of disturbing iwi Kupuna during future excavations, the MLIBC requests the Grand Wailea Resort refrain from conducting ground disturbance activities at the Grand Wailea Resort, 3850 Wailea Alanui dr. TMK (2) 2-1-008: 109. The grease trap project is exempted from this motion providing that the work is done by hand with appropriate and sufficient archaeological monitoring.

Motion by Fisher, second by Dowling.

The MLIBC requests a full accounting and inventory of iwi kupuna uncovered during work spanning from the 1970s to the present at the GWR. 3850 Wailea Alanui dr. TMK (2) 2-1-008: 109. This inventory should include those remains kept on site and those that may have been moved off site to various locations on Maui.

Motion by Fisher, Second by Dowling 12:20 PM

The MLIBC requests a metes and bounds determination of the boundaries of both burial preserves to maintain the astral space (kino wailua) of GWR burial preserves, in consultation with lineal and cultural descendants of the Pae'ahu ahupua'a, Malama Kakanilua, Ho'oponopnu o Makena, and the Pele Defense Fund.

Motion Fisher second by Dowling 12:26.

Maui Lanai Island Burial Council Motions Passed Unanimously 4/21/22

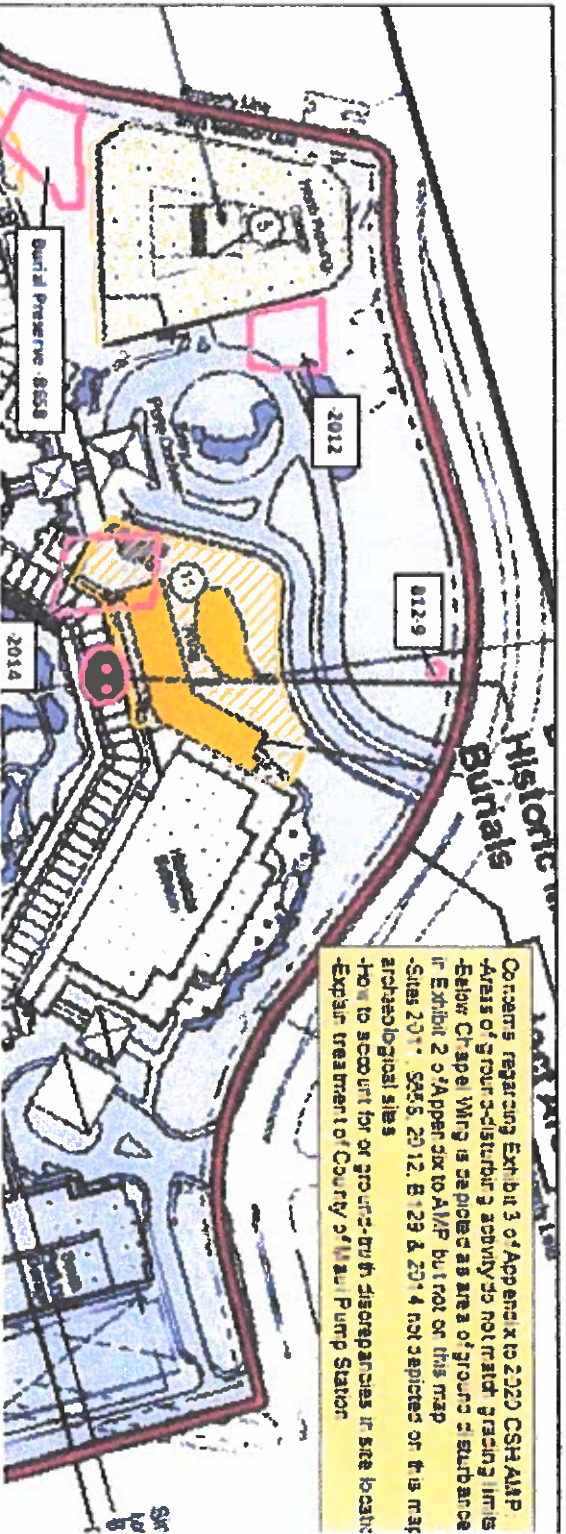
The image below shows site 2802 location in relationship to the present day Humuhumu

Site 2802 occupied a high natural bluff overlooking a natural stream channel (Kahawai) the bluff (approximate location show by GREEN STAR on map 1. It was not discovered until 1988 with the discovery of cobbles 6.5 m long x 2 m wide by 3 m. high. It was destroyed in 1988 with the leveling of the bluff. It was likely a ceremonial site of some sort- perhaps a marker for the numerous burials interred there.

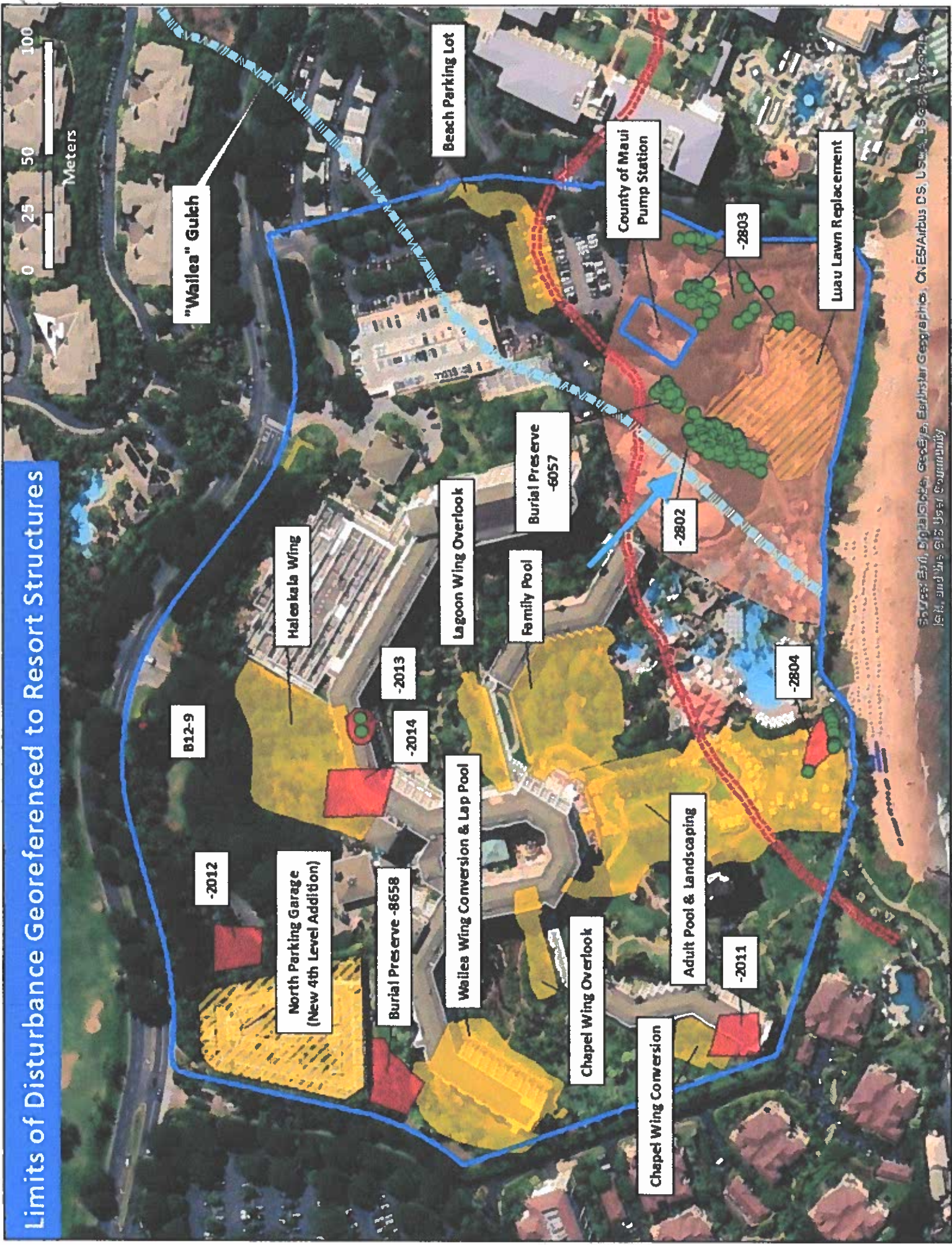
This bluff was leveled to form the saltwater pond and the foundations for the Humuhumu Pump Station. (It is believed by many with good reason that deeper burials : were present on the bluff.)

The burials "inadvertently" disturbed in 2006 when the first grease interceptor excavation was made. The deeper burials that became part of site 6057 preserve were interred in the area of the bluff. The deeper burials present on both sides of a kahawai feature, as Kalanianaʻohleki noted in his report. The deeper burials that lay undetected, just as the burials clearly runs the risk of disturbing additional burials that lay undetected, just as the burials be made to avoid more impacts to iwi kupuna

Maui Lanai Island Burial Council Motions Passed Unanimously 4/21/22



Limits of Disturbance Georeferenced to Resort Structures



Source: Earth DigitalData, GeoEye, Earthstar Geographics, CNES/Airbus D.S., USDA, USGS, AeroGRID, IGN, and the GIS User Community