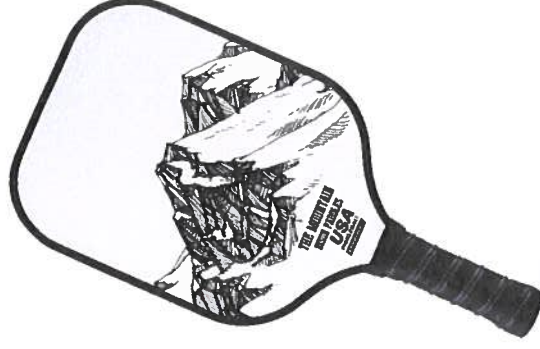


South Maui Pickleball

Waipuilani County Park



County Pickleball Activity At Waipuilani Park

by Steve Mark (dignset@hotmail.com)

- Conversion of 2 tennis courts into 8 pickleball courts (2019 and 2020)
- Open play between 8 am and 7 pm daily
 - Busy periods – 8 am - noon, 4 pm – sunset.
- Portable toilet service added (2022)
- Vehicle lot at the park filled up daily
- Player count continues to grow each year
 - Typically 40-80 players each morning
- **Deteriorated court surface needs replacement**

Number of Players Continues to Grow

- Players are a mix of locals and tourists
- Recent Images of Waipuiani Pickleball popularity



11/27/22, 8 am
32 playing
Several waiting



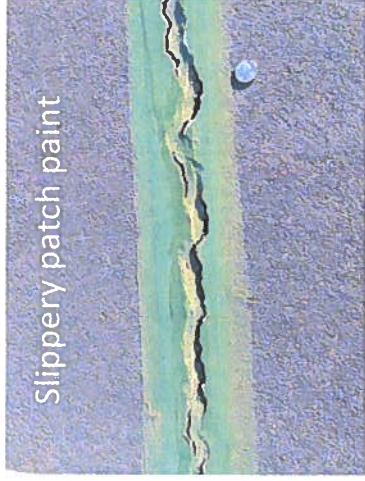
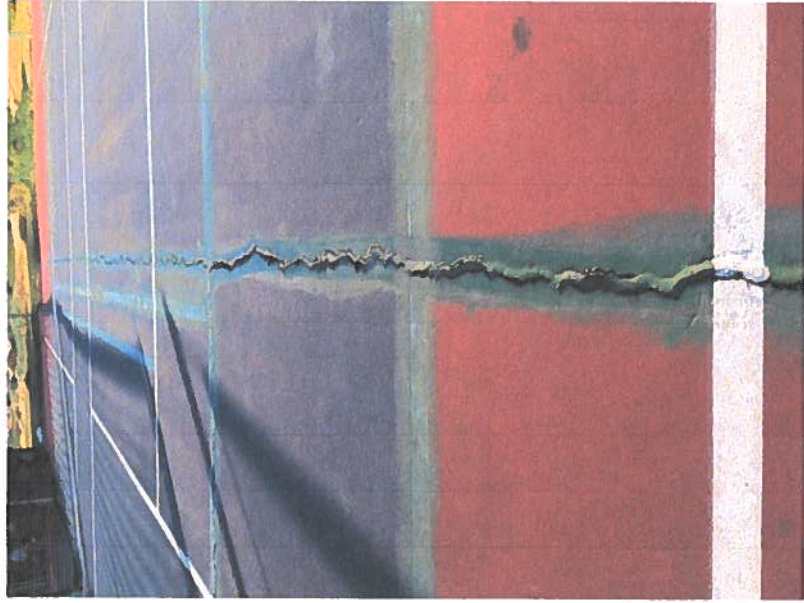
11/30/22 10 am
32 playing
19 waiting



12/07/22 9:30 am
32 playing
25 waiting

Surface Conditions are Hazardous

- There are surface cracks and slippery sections



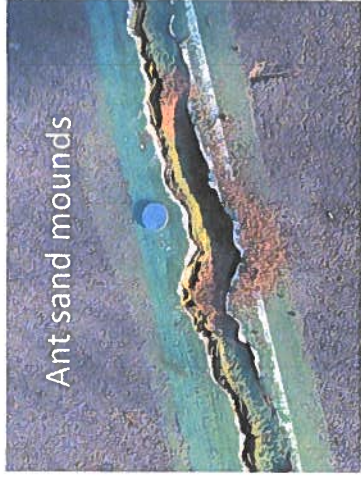
Slippery patch paint



Large gaps



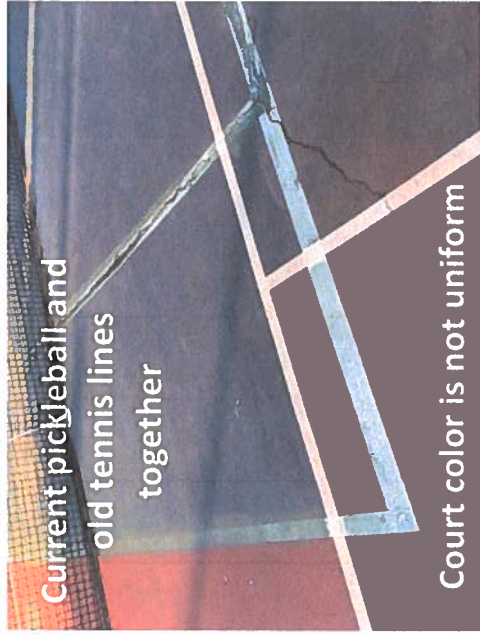
Weeds



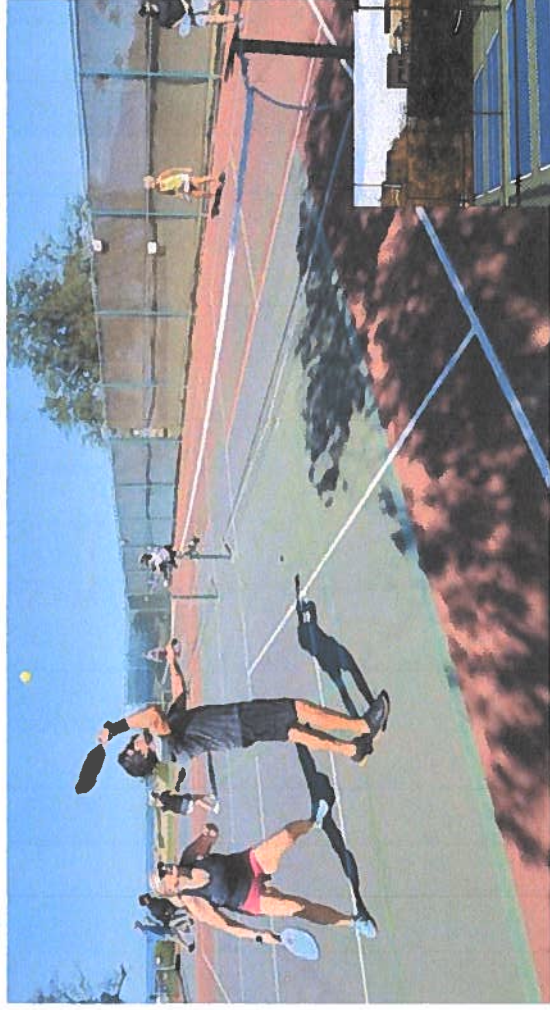
Ant sand mounds

Surface Conditions are Confusing and Unightly

- There are crisscrossing lines and odd color patterns



Repair and Repainting Can Fix the Issues



**How about a 40 year court
facelift?**